

# THE GREAT REMPSTONE STEAM & COUNTRY SHOW 2023



**ARENA DISPLAY TIMES - EVERY EXHIBIT LISTED - SITE MAP**



**PROGRAMME SPONSORED BY SANDICLIFFE NOTTINGHAM**



**INEOS**  
GRENADIER

**NOW AVAILABLE  
TO ORDER**

# BUILT ON PURPOSE



**INEOS**  
GRENADIER

**Sandiccliffe**



## NATIONAL TRACTION ENGINE TRUST

### Introduction

The National Traction Engine Trust (NTET) was formed in 1954 to ensure the preservation of road going steam engines. Some 2000 engines are in use both in the UK and overseas. Our membership is made up of individual members and affiliated clubs from throughout the world. There is a very lively rally scene where enthusiasts can see the engines at work. The NTET is an authorised body assisting in the safe running of most of these events.

The NTET needs new members, people like you, with an interest in the preservation of roadgoing steam vehicles, help us, with the continuing struggle, against legislation, the need for safety training and production of the various codes of practice. Your subscription will help the continuation of our work to make sure, part of our national heritage, the road steam vehicle remains for future generations.

### Benefits

You do not have to own a steam engine or vehicle to gain a great many benefits from membership of the NTET, although those who do can profit significantly from special insurance terms, technical advice and assistance with finding spare parts.

All members receive the Trust's high quality colour magazine, *Steaming*, a quarterly publication which keeps its readers up to date with developments in the traction engine world at home and abroad. Articles included cover technical and historical topics, rally news, for sale and wanted advertisements (which are free to members) plus a host of other interesting items. During the year, you may, as a member, take part in one of our Traction Engine Driving Courses at a very reasonable cost.

**If you would like to have more information about the National Traction Engine Trust or a Rally List then send a SAE to: NTET, PO Box 102, Wrexham, LL13 0ZS.**

Contents:	Page		Page
American Trucks	34	Mounted Games Association	12
Arena Events	8	National Traction Engine Club	1
Barking Mad Dog Show	44	Obituaries	11
Breakdown Vehicles	35	Organising Committee & Thanks	9
Buses	35	Showman's Living Vans & Vehicles	40
Chairman's Letter	2	Stationary Engines & Horticultural Bygones	24
Classic Caravans	39	Steam Apprentice Club	13
Commercial Vehicles	32-33	Steam Engines	14-15
Fairground Organs	15	Trophy Awards & Prizes	43
Map of the Showground	4-5	Veteran, Vintage & Classic Cars	36-37
Military Vehicles	34	Vintage & Classic Tractors	26-27
Miniature Steam	18-19	Wildlife & Conservation Area	16
Model Tent	20-21	Working Area	42
Motor Cycles	28-30	2425 Squadron RAF Cadets	25

**Travel Back in Time with**  
**The Great**  
**Rempstone Steam & Country Show**

**Chairman's Letter**

Dear Visitor,

Thank you for supporting the rally this year. 'Bigger and Better' is the theme for the 2023 show with more steam, more vehicles and a new addition; tractor pulling. We have extended the site to include a completely new field and many of the exhibits are in new positions so please check out the site plan to ensure you do not miss anything! Sponsorship by Sandicliffe Nottingham allows us to supply a complimentary programme for the first time and it is also available in downloadable format. I'm not totally sure I understand the next bit, but there will be QR codes around the site to provide additional information... Rempstone moves into the 21<sup>st</sup> century whilst maintaining the old world charm that the show is famous for!

I hope you enjoy the show and take advantage of the entertainment we have worked tirelessly to make available to you. Rempstone has always been a happy event ; so relax, soak up the atmosphere, and enjoy your day with us.

*Dave Morley, Chairman.*

**EMERGENCY ON SITE CONTACT NUMBERS**

**FIRE AND RESCUE: 07590780855**

**MEDICAL FIRST AID: 07973729404**

**LOST CHILDREN: Please contact a member of the committee (Red T-Shirts with Rempstone Logo), Show staff at the Secretary's Tent (Ringside), or Medical First Aid.**

**Please be aware that children's wristbands are available for you to put your contact number on.**

**Safeguarding procedure will be followed.**

# Rempstone 2024!

Put the date in your diary now  
13<sup>th</sup>-14<sup>th</sup> July 2024



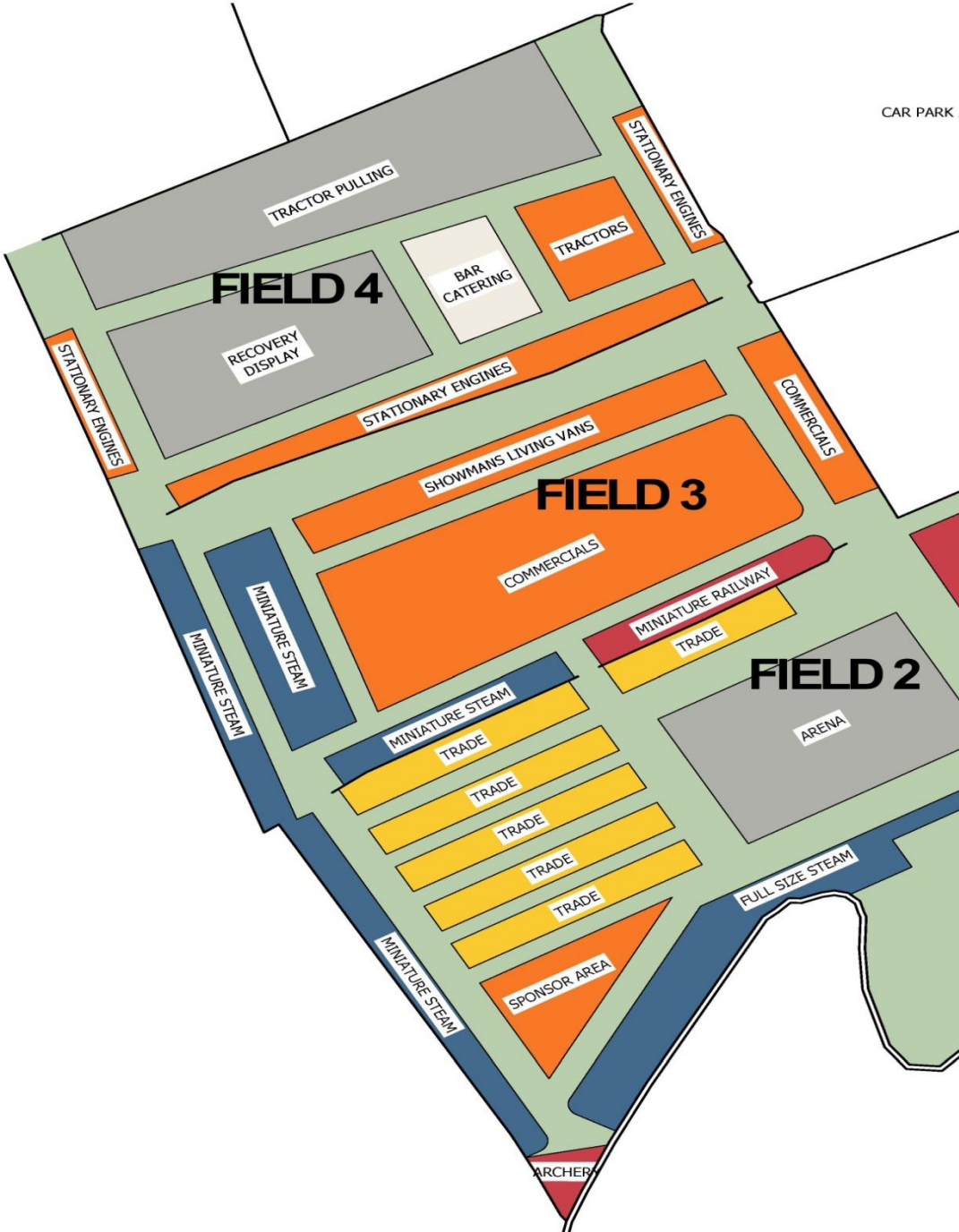
Lots to look forward to: we are anticipating the JC Balls Dancing Digger team to enthrall us in the main arena as well as a having a host of exhibits, entertainers, birds and beasts. The nostalgic sights and sounds of Fair Organs, rides, Showman's Engines Vintage vehicles will be back once more to assail your senses. See you in 2024!

## Atlantic Railway Ride

The Late Bill Dorman's Atlantic Railway was a firm favourite for many over the years at local events such as Rempstone, Six Hills and Kegworth. This year we welcome the return of Dorman's Atlantic Railway which is still within the Dorman Family now owned by Stephen Dorman and Family.



# Map of the Showground





# *Ye Olde Forge*

## *Tea Rooms*

The Ye Olde Forge Tea Rooms are delighted to be attending this years event, bringing our friendly waitress service along with china cups, plates and silver cutlery!

We will be offering our usual service of a **Full English Breakfast** served from 8am, followed by **freshly made sandwiches, toasties, hot lunches and homemade cakes** available throughout the day.

We will also be serving **home-cooked evening meals from 6.30pm on Friday and Saturday evenings.**

Booking advisable to avoid disappointment, just call 07563564563 or pop into the Tea Rooms once we're set up and running! We can also cater for larger groups although pre-ordering is advised (menus available in the tea room).

We look forward to welcoming back our regular customers and meeting some new faces, as we enjoy this year's rally season.







we are a small family run business that can cater for all your event catering needs from a single mobile unit to full catering concessions we offer a wide selection of outlets to suit most any requirements but can often tailor our outlets to suit your needs our outlets are maintained to the highest standards and are regularly inspected for gas safe, full electrical test, work hand in hand with our local authority to offer a high standard of service all our staff are individually trained and hold a class 2 food hygiene certification we like to pride ourselves on the personal touch to give events a relaxed atmosphere.

### Contact

T: 07885241766 E: c.gillingham@ntlworld.com  
 Gillys Fine Food, 26 Whitehill Road,  
 Ellstown, Leicestershire LE67 1EL  
[www.gillysfinefoods.co.uk](http://www.gillysfinefoods.co.uk)

### We attend events such as:

- donington park
- game fairs
- mallory motorsport
- music festivals
- pop concerts
- flower shows
- steam rallies
- sporting events

Many Thanks Chris Gillingham



## Programme of Events

### SATURDAY

In Field 4 Tractor pulling will take place throughout the day and into the evening, also there will be a display by Crouch's Heavy Vehicle Recovery Group

#### Arena Events (Field 2):

- 10.30 Vintage and Classic Bikes
- 11.00 Vintage and Classic Cars.
- 11.30 Mounted Games
- 12.15 Commercials
- 13.15 Tractors
- 14.00 Falconry Display
- 14.30 Steam Parade
- 15.30 Steam Winching
- 16.00 Mounted Games
- 17.00 Ring Events Close

### SUNDAY

In Field 4 Tractor pulling will take place throughout the day, also there will be a display by Crouch's Heavy Vehicle Recovery Group

#### Arena Events (Field 2):

- 10.30 Vintage and Classic Bikes
- 11.00 Vintage and Classic Cars.
- 11.30 Mounted Games
- 12.15 Commercials
- 13.15 Tractors
- 14.00 Religious Service with the Seaforth Highlanders Pipe Band
- 14.30 Falconry Display
- 15.00 Steam Parade
- 16.15 Mounted Games
- 17.00 Ring Events Close

*The organisers reserve the right to change the advertised programme without prior notice. Every effort has been made to make this event a success, should it be that arrangements differ from those advertised, we apologise for any inconvenience and disappointment which may spoil your enjoyment.*

***Children's Events: Face Painting in the wildlife area, Circus Skills School. Hive off to the bee tent, Slink off to see the reptiles!***

#### **WARNING**

**TRACTION ENGINES AND ALL OTHER MOVING EXHIBITS CAN BE DANGEROUS**

**FOR YOUR OWN SAFETY KEEP OUT OF ENCLOSED AREAS AND AWAY FROM MOVING MACHINERY**

**Although the Mounted Games Teams are highly qualified and capable, there is always the possibility of a unforeseen accident or incident. Spectators who watch the display do so at their own risk with regard to what they witness.**

**No related spectator claims will be supported.**

## Rempstone Traction Engine Club.

**2023 Show Personnel:** (\* indicates organizing committee)

**Ben Thompson\***  
Site Manager

**Ian Creasey \***  
President

**David Morley \***  
Chairman

**Sandra Hawksworth \***  
Club Secretary

**Tony Baines\***  
Treasurer

**Matt Howells-Chivers \***  
Safety Coordinator

**Emma Rayton\***  
Facilities

**Kate Morley-Tyson \***  
Programme Editor

**Laura Smith \***  
Catering & Wildlife

**Andrew Oliver\***  
Working Area

**William Jopling \***  
Motor Cycles

**Dan Brothwell\***  
Steam Engines &  
Organs

**John Wood \***  
Miniatures

**Gordon Marsh \***  
Tractors

**Stuart Brett**  
Site Co-ordinator

**Rob Selby**  
Commercials

**Steve Hopewell \***  
Trade Stands

**Andrew Shepherdson \***  
Vintage Cars

**Alan Holmes \***  
Model Tent

**Mark Yates**  
Barn Eng & Horticultural

**Andy Morley-Tyson**  
Main Ring

**Preetum Seetul**  
Main Ring

Rempstone Traction Engine Club would like to extend their thanks to the following for their sponsorship and assistance:

Andrew Harby, Turnpost Farm, Wymeswold.  
2425 (Nottingham Airport) Sqn. Air Training Corps, Leicestershire Constabulary.

Peter Adams: Site Electrician.

Christine Morley, Alan Clarke, Val Oliver

and all the others who turn up to help for the weekend.



Follow us on Twitter  
[@RempstoneSteam](https://twitter.com/RempstoneSteam)

High Quality | Cooked Fish | Fish& Chips | Beef Burgers | Chicken Burgers



## Do you have an event soon and need catering?

Birthdays      Parties  
Anniversaries   Club Nights  
Weddings      Work Events  
Festivals      Fairs



 [theoriginalcateringco](https://www.facebook.com/theoriginalcateringco)  
 [www.originalcateringco.co.uk](http://www.originalcateringco.co.uk)  
 07500 191 814

# Obituaries

It is with great sadness that we record the passing of several of our regular exhibitors:

**Duncan Robertson**



**Gordon Lamb**



**John Howick**



**Lynda Dockray**



A regular attendee at Rempstone Lynda exhibited the Marshall Roller 'Maid Marion' until last year. Our condolences to Fred.

**Geoff Lamb**



Although a regular on the steam circuit the last occasion he appeared at Rempstone was mid 1990's. He was the proud owner of 'So Be It' Burrell Road Tractor which he converted back from its intermediate life as a road roller. He was a gentle man who was always ready to help those with an interest in steam. Those in the steam world will miss him and his ready wit. Our condolences to Janet, Colin and Karen

**David John Oliver (Dolly) 1953 – 2022**



Dave was always interested in steam with his skills with being in the R.E.M.E the army's professional engineers, he has built over the years a collection of steam engines from 1" Minnie traction engine to a Tich a small 3.5" gauge locomotive and gradually getting bigger to 5" gauge locomotives and on to 7.25" gauge locomotives that he loved to steam around his local model engineering club tracks. Dave made a 3" scale Yorkshire steam wagon that he started to bring to Rempstone rally in the late 1980's which he rallied for many years and then went on to made a 3" scale Burrell that followed on in 2008 also to win best in show for that scale in 2009, sadly Dave died at the end of last year and will be sadly missed by all that knew him around the clubs and shows. RIP Dolly

## Happier News

**Marriages**

Becky Sheldon & John Chandler  
Liam Holmes & Laura Tune  
Callum Wilson & Abigail Ragsdale

**Births**

Nick & Sarah Hill – Scarlett  
James Etheridge & Cheryl Langin – Rafferty  
Zoe Thompson & Sam Timson – Joshua  
Mark & Nik Worbey – Rosie & Oliver  
Michael & Katie Holmes – Florence  
Scott Adams & Ellie Wilkinson - Henry



The Mounted Games Association of Great Britain hold the most exciting and exhilarating competitions on horseback! Our Sport involves riders racing against each other demonstrating Speed, Accuracy and Horsemanship. Races are a mix of turns, intricate hand overs, equipment collections and placements, vaulting on and off the horses – and of course – all at a gallop!

The Mounted Games Association of Great Britain (MGAGB) has over 2000 members who compete regularly, both in this country and abroad, throughout the season.



Mounted Games were the inspiration of H.R.H. Prince Philip. When the late Col. Sir Mike Ansell was Director of the Horse of The Year Show, Prince Philip asked if he could devise a mounted competition for ordinary children which would be fun and which did not necessarily involve owning an expensive show pony.

In 1957, the Horse of the Year Show, (then held in Haringey Arena), staged the first Mounted Games Championship for the Prince Philip Cup and the competition was an enormous success from the start. However, Pony Club rules stated that riders must finish competing in the games when they reached the age of 14 years. Mr. Norman Patrick, the then Chairman of the Pony Club Mounted Games Committee, felt that there was a need for an organisation where riders could continue to play the games past this age and so decided to form his own organisation.

The Mounted Games Association of Great Britain was founded by Norman Patrick on 21st January 1984 (his 70th birthday) and was originally based at his home, Bunces Farm, Farnham, Surrey. Col. Sir Mike Ansell, the instigator of mounted games, became the Patron of the newly founded Association. There were seven founder teams in the Association :- Avon, Berkshire, Hampshire, Hertfordshire, Surrey, Sussex and South West Wales. It is from these original seven teams that the Association takes its theme music "The Magnificent Seven".



**"To foster the interest of all people under 21 in  
Steam Traction in its many guises"**

This means not only encouraging youngsters to work on and understand traction engines, steam rollers, wagons etc., but also to take an interest in their history, design and manufacture, stories of their use, photography and/or drawing engines, modelling, etc, In fact the whole hobby in its widest sense.

**Our Objectives...**

- Encourage youngsters to join the S.A.C. and learn in a safe environment the requirements and the workings of Road Steam Engines.
- Encourage apprentices not only to be competent around an engine, but when old enough, to pass the competency test.
- Arrange steam apprentice days with rally organisers and groups of willing individuals.
- Raise technical knowledge by arranging talks and practicals with 'craftsmen'.
- To introduce families to engine owners with a view to long term experience.

The Steam Apprentice Club is for people under the age of 21 who are interested in Steam Traction Engines. It was formed in 1979 by the National Traction Engine Club and now represents the young person's branch of the NTET.

If you enjoy visiting steam rallies, taking photographs and recording engines, collecting pictures or books about engines, talking about steam or if you just wish to learn more, the Steam Apprentice Club is for you.

To become a member of the SAC you need to fill in a membership form here.:  
[www.ntet.co.uk/sac](http://www.ntet.co.uk/sac)

As a member you will receive a quarterly magazine 'Raising Steam', get free entry to NTET Affiliated Rallies and the chance to take part in driving days and SAC events.

Membership is just £15 a year.

## Steam Engines

	<b>Make Portable</b>		<b>Nhp</b>	<b>Works No.</b>	<b>Reg. No.</b>	<b>Year</b>	<b>Wt Tons</b>	<b>Owner</b>
A1	Brown & May	Little Dragon	3 ½		-	1860	2	The Shearman Family
<b>Showmans</b>								
A2	Fowler	Repulse	8	15652	CU 977	1920	18	V.Gibson
A3	Burrell	King George V	8	3285	AH 5304	1920	20	P.Dunford
A4	Foster	Victoria	5	14564	FE 8055	1926	12	Mrs W. Thompson
A5	Foster	Obsession	4	14205	FE 1874	1915	6	M. Sheldon
A6	Foster	Endeavour	4	14066	FE 1589	1915	6	M. Sheldon
A7	Burrell	St. Brannock	5	3894	NX 947	1921	12	L. Millband
A8								T. HutchinsonC/O
	Burrell	Outlaw	4	3220	TE 3719	1910	12	K.Gray
A9	Garrett	Invincible	4	33259	BJ 4159	1918	8.5	J. Ragsdale
A10	Garrett	The Mighty Atom	4	33305	HT 7112	1918	8.5	R. Tyler
A11	Burrell	Progress	5	3950	MO 2916	1924	15	B. Newton
A12	Brown & May	General Buller	6	8742	AU 4705	1912	15	A. Rundle
A13	Fowler	Pride Of Shannon	7	15713	TI 1501	1923	18	G. Ellis
<b>Road Engines</b>								
A14	Burrell	Princess May	5	3202	TA 1973	1910	14	Dr. M. Pearson
A15		Belle Of The Wolds	7	15462	AD 9126	1919	17	A. Henton
A16	Fowler	Dreadnought	7	15463	DW 2121	1920	17	J. Somerscales
A17	J & H McLaren	Captain Scott	8	1421	BE 8732	1912	18	Woodward Family
A18	Fowler	Empress	7	14100	J 6673	1914	14	D. Maris
A19	Burrell	Dorothy	5	4093	DV 9252	1931	11	D & B Smith
<b>General Purpose</b>								
A20	Foster	Sprig	7	14410	UP 6410	1920	11	D. Bosworth
A21	J & H McLaren	The Little Wonder	8	127	HO 5618	25/08/1882	14	S. Arrowsmith
A22	Ruston, Proctor & Co		7	33189	CT 3949	1907	10	D. Palmer
A23	Ruston & Hornsby	Hildary	7	115100	DO 2953	1922	12	Brothwell Family
A24								S.Tomlinson & Family
	Fowler	Elsa	7	12761	BH 8166	1911	12	
A25	Wallis & Steevens	Maynargh	7	T169	BS 8161	1883	8	I.Briggs
A26								Mrs A. Boston. C/O
	Foster	Fiery Elias	6	14593	FE 9179	1927	10	I.Creasey
A27	Aveling & Porter		6	1995	BT 3939	1884	9 3/4	1995 Association
A28								K. Titchener & T. Wing
A29	Burrell		6	2426	BL 4843	1901	10	
	Ransomes, Sims & Jefferies	Sybil	7	18504	NO 6925	1906	10	V. Wray
A30	Ransomes, Sims & Jefferies	Langham Belle	7	42036	TL 2366	1932	10	M. Kirby
<b>Tractor</b>								
A31	Wm. Foster & Co	Nip'on Kid	4	3452	FE 358	1907	5	K. Miln
A32	Fowler	King Of The Road	3	16365	YC 3689	1928	5	R. Tyler
A33	Wm. Foster & Co	Ikanopit	4	14608	PN 5629	1930	5	Messer C. Arrowsmith
A34	Garrett	Queen Mary	4	33986	BJ 5601	1920	7.5	D. Bosworth
A35	Foster	Abigail	4	2948	CT 5745	1904	3	A. Wilson
A36								Baines & Jacobs Families.
	Aveling & Porter	English Princess	4	8030	KT 125	1913	5	
A37	Fowler	Lord Doverdale	3	14805	UG 1496	1917	5	D & S Cope
A38	Aveling & Porter	Nippy	6	11705	PP 7142	1926	8	J. Shelmerdine
A39	Garrett	Adventurer	4	33296	BJ 5510	1918	6	P. Bloom

### **Roller**



A40	Fowler	Old Tom	5	19356	JU 1294	1932	10	Williamson Family
A41	Aveling - Barford		6	AE998	DTM 540	1943	10	C/O K.Mills & Family
A42	Marshall		5	76795	FU 1325	1923	10	E. Jacobs
A43	Aveling & Porter	Prince Albert	5	4765	ME 2353	1901	10	The Saxton Family
A44	Aveling & Porter		4	7586	WR 9359	1912	8	J. Brown
A45	Wallis & Steevens	Chichester	4	8099	AOU 941	1936	10	A.Odell
A46	Marshall	Maid Marion	4	76116	YA 5040	1923	8	D & P. Crampton
A47	Fowler	Pentland Queen	5	17501	SY 3413	1927	10	F & L. Dockray
A48	Aveling & Porter	Katie	4	14017	SV 6022	1930	8	R. Inman
A49	Aveling & Porter	Odin	4	11833	YC 29	1927	8	M. Pugh
A50	Fowler	Titch	4	17071	BF 4887	1928	8	W. J. Andrews
A51	Aveling & Porter	Jenny	6	11171	PU 6775	1925	10	A & G Morrison
A52	Wallis & Steevens	Winfred George	4	7784	XP 2338	1924	6	A. Baker
A53	Burrell	Ethel	6	2642	TB3778	1904	15	Johnson Family
A54							14T	M & L Woodbine
							8CW	
	Aveling & Porter	Vulcan		7856	MD 5902	1912	T	J. Carr
A55	Fowler	Alice	4	16392	MB 8144	1925	8	J. Carbutt
A56	Aveling & Porter	Thistle-down	5	5163	NR 6525	1903	10	M.Stokes
	<b>Steam Wagon</b>							
A57	Sentinel S4			8884	TJ 3319	1933	9	P Massey
	<b>Ploughing Engine</b>							
A58	Fowler		16	13881	NO 372	1913	20	A. Flear
A59	Fowler		20	14375	BE 7548	1917	16	A. Flear
A60	Fowler		14	2267	AL 8344	1874	18.5	M. Hammond
A61	Fowler		18	15357	CT4132	1919	22	T, W & D Hammond



### Exhibit A33

Chris Arrowsmith's Foster Tractor PN5629 arrives on Friday night just in time to take on liquid at the 'Steaming Man' Bar.

### Fairground Organs

	Make	Year	Type	Owner
A62	Gavioli	Circa 1895	89 Key	B & C Wells
A63	Bruder	1930	41 Keyless	A. Johnson
A64	Limonaire	1910	46 Key	M. Sheldon
A65	Johnson	2020	46 Key	J. Johnson
A66	Gavioli		89 Key	V. Gibson

Please take the opportunity to visit us in the 'Wildlife and Conservation Area'

**Leicestershire and Rutland  
Bee Keepers  
Association**



'In the Wildlife area there will be an opportunity to get up close to a variety of animals and gain an understanding of the work of some of the wildlife and conservation charities. There will be representatives from the Leicestershire & Rutland Beekeepers Association, Bat Group and Wildlife Trust as well as The Wee Donkey Co., Saints Sled Dog Rescue, JCRS Falconry, Matt's Minibeasts to name a few.

The Party Workshops are on hand to offer all the opportunity to have a go at circus skills and the Barking Mad Dog Show will keep your four legged friends entertained.'

**Matt's  
Minibeasts  
&  
Friends!**

**Children's Reptile &  
Minibeast Parties**

Visits to Birthday parties,  
Schools,  
After-school clubs,  
Care homes,  
Scout/Guide groups

mattsminibeasts@  
hotmail.com

**Matt's  
Minibeasts  
&  
Friends!**

**10 am - 12 noon  
Meet the Minibeasts!**

**1pm - 3pm  
Meet the Snakes!**

**3pm - 5pm  
Meet the Lizards!**



FAIRVIEW FARM LOG CABINS  
&  
HOLIDAY ACCOMMODATION



Contact Us

E: [info@fairviewequestrian.com](mailto:info@fairviewequestrian.com)  
T: 07581 065286 (Deb) or 01623 793549  
W: [www.fairviewfarmholidayaccommodation.com](http://www.fairviewfarmholidayaccommodation.com)

Main Road, Ravenshead, Nottingham  
NG15 9GS

Looking for a relaxing, rural retreat? Look no further! Fairview Farm is the perfect place to unwind, either for a romantic break with a loved one or a carefree, family holiday.

Our safe 88 acres of stunning countryside offer 13 luxury Lodges & Cabins with plenty of space, great views and fresh air to enjoy. Take a walk around our nature trail with fantastic views, cosy under the stars in our stargazing area or fly a kite and play games in our fields with the kids! There is also a Games Room with pool table, air hockey and more! There is something for everyone to enjoy.....and the best part is, all of our facilities are FREE of charge to use!

Pamper a pony during your stay and meet our cheeky pygmy goats. Feeling lazy?? No problem. Snuggle up under a blanket around your private fire pit and soak in the peaceful surroundings.

Also perfect as a base for wedding guests and large gatherings as our accommodation sleep up to 55 guests.



## Miniatures

Miniature engines are often scale replicas of the full size engine or may be built to the owners own preferences. In either case they are examples of engineering precision which are all the more impressive because of their small size. Because of the scaling they are proportionally more powerful than the full size engines and can pull impressively large loads. They may be seen being driven around the site and are not always "on their peg" so keep a lookout for them as you wander round.

### 3" Scale and Under

	Scale	Make	Owner
B1.	2"	Fowler BB1 Ploughing Engine	B Fawcett
B2.	3"	Atkinson Standard Undertype Steam Wagon	E Marcer
B3.	3"	Clayton Wagon Electric Powered	N & H Hayes.
B4.	3"	Foden Wagon C Type And Trailer	A Whirledge
B5.	3"	Burrell Traction Engine G.P	J Marsden
B6.	3"	Sentinel Dg6 Wagon Under Construction	R Popejoy
B7.	3"	Allchin Traction Engine G.P	R & K Hodson
B8.	3"	Fowler Gp Traction Engine	P Fussell
B9.	3"	Sentinel Wagon Electric Powered	B Green
B10.	3"	Foster Traction Engine G.P	D Allsopp
B11.	3"	Aveling & Porter Steam Wagon	T Blyth
B12.	3"	Marshall Traction Engine G.P	S Weaver
B13.	3"	Wallis & Stevens Simplicity Roller	I Tricklebank

### 4"Scale and Over

B14.	4"	Garrett Traction Engine G.P	C Bull
B15.	4"	Burrell SCC Devonshire Road Locomotive	R & J Smith
B16.	4"	Fowler A5 Traction Engine	A Kirk
B17.	4"	Foster Traction Engine & 3" RSJ Baler	S & P Riley
B18.	4"	Burrell Traction Engine G.P	P Shaw
B19.	4"	Foster Traction Engine G.P	V Marcer
B20.	4"	Foster DCC Road Loco	T Baldwin
B21.	4"	Burrell DCC Road Loco	I Newman
B22.	4"	Burrell Traction Engine G.P	K Caulton
B23.	4"	Foster Traction Engine G.P	A Daws
B24.	4"	Garrett Traction Engine G.P	I Bunn
B25.	4"	Burrell Scenic Showmans Engine	F Walker
B26.	4"	Mclaren Road Locomotive	C Smith
B27.	4"	Foster Traction Engine G.P	B Wright
B28.	4"	Foster Traction Engine G.P	J Crane
B29.	4"	Brown & May Traction Engine G.P	J Robinson
B30.	4"	Foster Traction Engine G.P	J Bruce
B31.	4"	Burrell Traction Engine G.P	P Fairhurst
B32.	4"	Foster Traction Engine G.P	I Padgett
B33.	4"	Foster Traction Engine G.P	H Cleal
B34.	4"	Burrell Road Locomotive	P Roberts
B35.	4"	Burrell Traction Engine G.P	R Farmer
B36.	4"	Burrell Steam Roller Under Construction	R Farmer
B37.	4"	Burrell Traction Engine G.P	C Stinchcombe
B38.	4"	Mclaren Road Locomotive Showmans	R Foster
B39.	4"	Burrell Traction Engine G.P	J Redfern
B40.	4"	Burrell Traction Engine G.P	D Fleming
B41.	4"	Fowler R3 Showmans Engine	J Ives
B42.	4"	Durham & North Yorkshire G.P	S & B Fern
B43.	4.5"	Burrell Traction Engine G.P	P Hood
B44.	4.5"	Burrell Traction Engine G.P	P Hibble
B45.	4.5"	Burrell Traction Engine G.P	R Prime
B46.	4.5"	Foden C Type Wagon	M Tricklebank
B47.	4.5"	Burrell Traction Engine G.P	P Hodgkinson
B48.	4.5"	Foden C Type Wagon	P Weston
B49.	4.5"	Burrell Traction Engine G.P	G Witham
B50.	4.5"	Foden SWB Steam Wagon	I Clipston
B51.	4.5"	Burrell Traction Engine G.P	G Jackson

B52. 4.5" Foden C Type Wagon  
 B53. 4.5" Burrell Traction Engine G.P  
 B54. 4.5" Foden C Type Wagon

R & J Grice  
 V Burton  
 R Hart

**6" Scale Steam Engines (half size) and over**

B55. 6" Garrett 4 CD Tractor  
 B56. 6" Tasker A2 Tractor  
 B57. 6" Burrell Road Locomotive  
 B58. 6" Foster Traction Engine G.P  
 B59. 6" Burrell Prototype Wagon  
 B60. 6" Garrett 4 CD Tractor  
 B61. 6" Ruston Proctor Tractor  
 B62. 6" David Brown Cropmaster Tractor  
 B63. 6" Field Marshall Tractor  
 B64. 6" Burrell Scenic Showmans Engine  
 B65. 6" Tasker Little Giant Tractor  
 B66. 6" Savage Little Sampson Tractor  
 B67. 6" Burrell DCC Road Locomotive  
 B68. 6" Ruston Proctor SD Tractor  
 B69. 6" Burrell Gold Medal Tractor  
 B70. 9" Burrell DCC General Purpose Engine  
 B71. 6" Ruston Proctor SD Tractor & Racksaw Bench

B Fairbank.  
 J Crawley.  
 D Evenson.  
 A Simpkins.  
 P Lilley  
 A Nutting.  
 I Morris.  
 A Daws.  
 F Walker  
 M Robinson  
 A Wilson  
 C Webb.  
 M Venn  
 L Chandler  
 H Stannard  
 I Jenner  
 R Kew ( is in the working area)

**Judge Mr R. L. Moore**



  
**THE WEE DONKEY COMPANY**

- Donkey adoption schemes
- School/educational visits
- Bespoke events & donkey hire
- Giving back to the community (care homes, hospices etc)



 Follow US  



No experience required  
 Ages 8 and up

Come and join Soar Valley Archers as we introduce you to the wonderful world of archery

Can you slay the dragon for the younger kids

Follow us at 



### Model Tent

C1	Model Fairground Organ and Tow Truck, built in the 1960's by the late Cliff Scott. Cliff left the models to the North Notts. Preservation Club (NNPC) for custody and exhibition. Exhibited by the NNPC Secretary.	Peter Adams
C2	1" scale Bassett Lowke Burrell Traction Engine. 5" gauge Maxtrack "Ruby" 0-4-0 Locomotive with tender, fully working. Built in the 1980's. Trueman 22 Note Street Organ, No. 24, built in 1992.	Barry John Baxter
C3	1/24 scale self-built Fairground Ride.	Robert Blades
C4	1/24 scale Fairground Transport.	Nicky Blanchard
C5	1.5" scale Wm. Foster & Co. 7 NHP Shpwmn's Road Locomotive. 2" scale Aveling & Porter AD Roller Ævlyn.	Dan Brothwell
C6	Collection of scratch built radio Controlled Classic Vehicles and Automata.	Len & Linda Cooper
C7	1/50 scale Fairground.	Steve Cooper
C8	Various 1/12 scale Fairground Models, Rides, Transport, Shows, etc., built by her Father, D. Gavioli-Dakin, over the last 55 years, and still making them.	Tina Dakin-Richardson
C9	1970's and 1980's Meccano Shop Display Models.	Stuart Dale
C10	1/76 scale Fairground Transport Display	Nathan Daws
C11	1/24 scale Noah's Ark Speedway. Bought by late father, and fully rebuilt by current owner in 2021. 1/14 scale Tamiya Radio Controlled Knight Hauler Tractor Unit, modified with light, sound and gears.	Arthur Flinton
C12	1/16 scale Fairground Dodgem Transport, including Lorries and Living Wagon Models, built in the 1990's.	Dick Furniss
C13	Various 1/12 scale scratch built Fairground Models built by the owner between 1969 and the present.	David Gavioli-Dakin
C14	1/24 scale Cake Walk 1/24 scale Skid 1/24 scale Foden	Charle Golder
C15	1/24 scale Model Fairground Rides and Transport.	Stewart Graves
C16	Model 1/24 Scale Fairground Display	Andrew Grover
C17	Matchstick Models.	Richard Harvey
C18	1960's Stuart Turner Beam Engine. Built by the late Jack Bird. 1960's Stuart Turner 10v Engine. Built by the late Jack Bird.	David Haywood
C19	1" scale Steam Roller in case. 1/12 scale Fairground Organ built in 2023.	Steven Hebblethwaite
C20	1/76 scale Model Fairground Display, with working rides. Built between 2019 and 2023.	Ian Hides
C21	Model Fairground Organs, built in the 1970's.	Alan Holmes
C22	1/24 scale Mont Blanc, built in 1989. 1/24 scale Autodrome, built in 1990.	Bert Horobin
C23	1/24 scale Fairground Transport.	Rob Horton
C24	Various Fairground Models.	Ian and Hayley Johnson
C25	Wooden Steam Engines Models, 7 in total.	Ray Mee
C26	A display of Meccano Models, Bayko Buildings and Dinky Cars.	Robert George Miller
C27	1/24 scale Fairground Transport.	Terry and Christine Millington
C28	1/24 scale Model Fairground Rides and Transport.	Daniel and Roy Mortimer
C29	1/12 scale Model Shops.	Sandra Mortimer
C30	1/24th scale Fairground Models with Transport.	Neil Osgerby
C31	Various makes of Traction Engines, Road Rollers and Living Van, built in 2000.	John Palmer
C32	4 mm. scale on going project of Fairground models and Transport, made by the owner. If you're lucky you may catch the Exhibitor in the process of making another model.	Chris Partridge
C33	2" scale Freelance Engine. Restoration Project saved from the skip, started in 2019.	Thomas Peers
C34	1/24 scale scratch built Waltzer, 1 of 2 owned. Built circa 2010. 1/24 scale scratch built Big Wheel or Paratrooper. Built circa 2010. 1/24 scale scratch built Side Stalls and other attractions. Built circa 2020.	Michael Reynolds
C35	Assorted 1 inch scale scratch built cardboard models of traction engines and agricultural implements built over the last 15 years.	Paul Riley
C36	1" scale AEC Militant Towing Living Van, built 1970. 1" scale Packing Truck, built 1970. 2 1" scale Showman's Living Vans, built 1970.	Peter and Madeline Ross

- |     |  |                         |
|-----|--|-------------------------|
| C37 | 1/12 scale Foden and Scammell transport vehicles for model Waltzer, which can be built up and working. Built in 2012.  | Stan and Sylvia Savage  |
| C38 | Various Static and Working Meccano Models  | Matthew Shaw            |
| C39 | 1/24 scale Charles Farrell Big Wheel and Transport.  | Rod Sherwood            |
| C40 | 1/24 scale Waltzer, Transport, Side Stalls and Kids Rides.   | Perry Thomas            |
| C41 | Freelance static model of a typical Showman's Steam Tractor. Hand built during June, July and August 2014.<br>Freelance static model of a Steam Roller, 18 inches in length with water ballast type wheels. Hand built during October/November 2013. | Peter and Freda Trueman |
| C42 | P. Trueman 20 Note Hand Turned Reed Organ, built in 2015.  | Graham Whitehead        |
| C43 | 1/24 scale Fairground and Transport.   | David Wilson            |
| C44 | 1/24 scale Fairground Rides made from 1988 onwards.  | Ray Wilson              |
| C45 | 1/24 scale scratch built 1960's Period Garage built in 2015.   | Mark and Tracey Wright  |



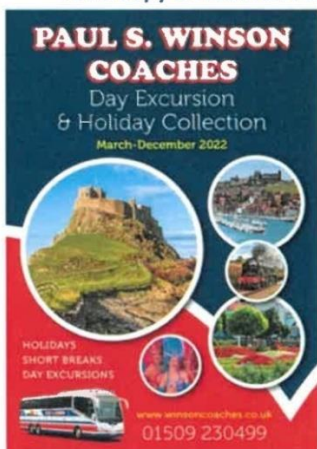
**Paul S. Winson Coaches offers a wide range of Holidays & Day Excursions, with an ever-changing variety of destinations with local pickups!**

**It's not too late to book a last-minute trip or if you are planning your Autumn or Winter getaways then we have some great deals for you to book now!**

**From London Theatres, seaside escapes, special events and visits to historic buildings, we've got something for everyone!**

**Please visit our website for more information & book online at: [www.winsoncoaches.co.uk/holidays-and-excursions](http://www.winsoncoaches.co.uk/holidays-and-excursions)**

**For a copy of our latest brochure, contact us on: 01509 230499**



**Are you looking to book a day or evening out? Or maybe a trip to Europe?  
For all Private Coach Charter Enquiries please call: 01509 232354  
PAUL S. WINSON COACHES, LOUGHBOROUGH, LE11 5XR**

# J. SWINGLER TRANSPORT

A professional heavy goods transportation service, covering all aspects of transport, including:

- Steel Construction
- Tarmac Industry
- Construction Industry
- Railway Preservation Societies
- Railway Industry
- Manufacturing
- Agricultural Plant
- Fabrications
- Utilities

T: 0115 9821 453

M: 0783 6254 926

E: [traffic@jswinglertransport.co.uk](mailto:traffic@jswinglertransport.co.uk)

W: [www.jswinglertransport.co.uk](http://www.jswinglertransport.co.uk)





## Stationary Engines & Horticultural Bygones

	<b>Engine</b>	<b>Year</b>	<b>H.P</b>	<b>Owner</b>
D1	Amanco	1923	21/4	M Yates
D2	Lister	1946	21/4	C Chamberlain
D3	Bonsa (Truck)	1950	-	E Brant
D4	Wheel Horse	1972	-	J Mayfield
D5	Ruston Hornsby	1923	5	D Goodwin
D6	Baron Pearson kindling Machine	1930	-	B Ward
D7	Ruston Hornsby	1941	11/2	D Williamson
D8	Amanco	1916	4	S Briers
D9	Amanco	1920	13/4	S Briers
D10	Garden Machinery			R Smith
D11	Wolseley	1940	11/2	T Parker
D12	Bamford	1940	11/2	T Parker
D13	Lister Petter	1960	3	T Parker
D14	Baron & Pearson	1930	-	B Ward
D15	Amanco	1916	13/4	C Smith
D16	Bamford	1944	6	C Adams
D17	Lister	1930	3	R Adams
D18	Stewart Turner + Garden Items	1930	-	S Smith
D19	Petter	1919	5	N Shepherd
D20	Petter	1970	6	B Hallam
D21	Ruston Hornsby	1949	20	M Smith
D22	Amanco	1918	4	M Smith
D23	Junkers	1930	10	W Thornley
D24	Lister	-	11/2	R Kirk
D25	Bamford	1926	21/2	B Gilbert
D26	Tangye	1920	13/4	P Sole
D27	Lister	1960	11/2	P Coglet
D28	British Anzani	-	-	B Booker
D29	Allen	1960	-	B Booker
D30	Bamford	1923	21/2	D Amies
D31	Ruston Hornsby	1927	5	G Strutt
D32	Bamford	1941	31/2	N Thornley
D33	Ruston Hornsby	1941	3	M Wain
D34	Associated	1915	11/2	J Robey
D35	Amanco	1929	2	G Folds
D36	Fowler	1939	11/2	G Widdowson
D37	Ontario Wind Engine	1916	13/4	M Carrington
D38	Tarpen	-	-	S Jinx
D39	Lister	1940	3	S Nelson



In 1856, Tangye started business in a small way in Birmingham as a hardware factor and commission agent. His first customers were the Cornish mine-owners in the Redruth district. In March 1857, Richard Tangye, with brothers James and Joseph, started a manufacturing business in Mount Street under the title of James Tangye and Bros. Principally manufacturing hydraulic appliances and particularly lifting jacks, on 31 January 1858, their jacks were successfully employed in the launching of Brunel's steamship SS Great Eastern. In 1867 the patent for a new type of Direct-acting Steam Pump was acquired, and in 1870

the company commenced the manufacture of steam engines. The first gas engine, a one nominal horsepower two-cycle type, was sold in 1881 and in 1890 the firm commenced manufacture of the four-cycle gas engine. Incorporated as a limited company from 1881, in 1894 they produced their first hot bulb engine. Richard Tangye was knighted in 1894.

## **2425 (Nottingham Airport) Royal Air Force Air Cadets**

The Royal Air Force Air Cadets is a voluntary youth organisation which is sponsored by the Royal Air Force. With around 45000 members, aged 12-20 years old, within over 900 Squadrons throughout the UK. The cadets are trained and support by adult volunteers from a range of back grounds, many of which have previous military experience. All the adult volunteers are DBS cleared and are trained either by the RAF or the various National Governing bodies for the wide range of activities that the cadets are offered.

When each cadet joins they spend between 3-5 months as a Junior Cadet, during which time they are given basic training in subjects such as History of the RAF and Air Cadets, Drill, Navigation, Radios and Field Craft. Once they 'pass out' they are fully enrolled into the organisation and can participate fully in the activities that the organisation offers (with some age restrictions). These include; UK and overseas camps, outdoor pursuits, sports, flying and gliding, Target Shooting, the Duke of Edinburgh award scheme, First Aid, Field Craft Training, Leadership Training, Aeronautical studies, Ceremonial drill, community projects and much more.

Although the organisation is not designed to be a recruitment ground for the armed services many cadets do leave to join the regulars. However, the skills and qualifications that the cadets can achieve are recognised by a wide range of employers in many sectors. The official Aims of the Air Cadets are:

To Promote and encourage among young people a practical interest in aviation and the RAF

To provide training which will be useful in the services and civilian life

To foster the spirit of adventure and develop qualities of leadership and good citizenship

Here at Rempstone the 2425 (Nottingham Airport) Sqn has a long history of supporting the show committee by marshalling vehicles in the car park and selling programmes. Please come to see us at our stand if you have any questions or would like more information about becoming a member.

Alternatively, you may wish to visit our website or follow us on social media at;

[www.2425atc.org.uk](http://www.2425atc.org.uk)

[www.facebook.com/atc2425](https://www.facebook.com/atc2425)

[www.twitter.com/2425AirCadets](https://www.twitter.com/2425AirCadets)



### Vintage and Classic Tractors

	<b>Make</b>	<b>Model</b>	<b>Year</b>	<b>Reg. No</b>	<b>Owner</b>
E1	Case	1832	1927	None	M Jopling
E2	International	10/20	1928	DWD 330	M Sparrow
E3	International	10/20	1929	None	J Stafford
E4	Miniapolis	2741	1929	None	M Jopling
E5	Fordson	N Industrial	1938	DRF 291H	S Price
E6	Allis Chalmers	U	1938	KSV 797	C Gilbert
E7	Field Marshall	1220	1938	None	O Gilbert
E8	Allis Chalmers	WF	1939	None	S Gilbert
E9	Fordson	N Industrial	1939	FNN 808	S Price
E10	Fordson	Standard N	1939	FRR 210	K Bramley
E11	Fordson	N Industrial	1939	716 UMA	A Bancroft
E12	Fordson	Standard	1940	FCV 970	D Blakemore
E13	Allis Chalmers	Model U	1940	None	K Barwell
E14	Lansing Bagnall TD200	Aircraft Tug	1940	None	D Jubb
E15	John Deere	Model B	1941	None	A Surman
E16	Fordson	Standard	1942	GOR 413	D Barwell
E17	Allis Chalmers	Model B	1942	FP3 807	T Chapman
E18	Fordson	Standard	1943	None	J Elliott
E19	E20	Standard N	1944	BBW 510	R Kinch
E20	John Deere	R	1944	None	M Adams
E21	Ford/Ferguson	2N	1945	None	S Stannage
E22	Field Marshall	Series I	1945	CSU 309	M Jopling
E23	Field Marshall	MK11 Contractors	1946	HNN 343	J Mellors
E24	Ferguson	TE20	1947	XAS 881	S Durant
E25	Ferguson	TE20	1947	EBE 239	D Atter
E26	Ford	8N	1947	NXS 277	M Newbery
E27	Allis Chalmers	B	1947	ORF 853	R Prince
E28	Fordson	E27N Half Track	1947	None	D Hollingshead
E29	Fordson	E27N	1947	JNN 164	L Hollingshead
E30	Ferguson	TEA 20	1948	FFW 480	E Harvey
E31	Field Marshall	Series 2	1948	None	N Barwell
E32	Opperman	Motorcart	1948	EPN 796	C Stokes
E33	Massey Harris	55	1949	LAL 140	B Craig
E34	Field Marshall	Series 2 Contractors	1949	EPN 665	K Hall
E35	David Brown	Crop Master	1950	ECT 660	L Allen
E36	Ferguson	TED 20	1950	OXS 925	C Clamp
E37	David Brown	Cropmaster	1951	VRE 967	S Draycott
E38	Ferguson	TEF 20	1952	KXS 477	D Flint
E39	Field Marshall	3A		None	B Burton
E40	Ferguson	TED20	1952	NXS 561	I Clark
E41	Albion	Clansman	1953	SX 6954	B Burton
E42	David Brown	Cropmaster 30D	1953	KAY 876	R Jackson
E43	John Deere	40 S	1953	530 XVN	L Parker
E44	Singer Monarch	MK4 Rowcrop	1954	None	T Ranyard
E45	Ferguson	TEF Diesel	1954	Q886 YUX	R Adlard
E46	Ferguson	TEF 20	1954	OAO 509	P Hetherington
E47	Massey Ferguson	TEA 20	1954	410UXF	D Vonn
E48	E20	E1A Industrial Major	1954	450 UXW	P Chadbourne
E49	Ferguson	TEF20	1955	OWX 770	J Rushton
E50	Fordson	Major E1A	1955	946 XUL	A Saunderson
E51	Nuffield	Universal	1955	VKR 122	R Cobleby
E52	Fordson	Major County	1955	None	F Kirk
E53	Fordson	Major E1A	1955	None	J Tuckwood
E54	Ferguson	FE35	1957	XTT 442	S Durant
E55	Massey Ferguson	835	1957	XAH 605	J Tuckwood
E56	Fordson	Major E1A	1957	685 YUD	P Chadbourne
E57	Internaional	B250	1958	645 UYH	D Earl
E58	Massey Ferguson	FE35	1959	382 XVS	C Oswin
E59	Massey Ferguson	FE35	1958	157 YUM	T Green
E60	Fordson	Dexta	1958	RUT 476	C Baker
E61	Fordson	Dexta	1958	548 XVE	C Redburn

E62	Massey Ferguson	65 MK 1	1958	LYB 494	C Coombes
E63	Massey Ferguson	MF65	1960	793 XVH	M Long
E64	Ford	Dexta	1960	RSL 676	P Sharp
E65	Massey Ferguson		1960	None	R Kinch
E66	Fordson	Major E1A	1960	706 TVX	C Redburn
E67	Fordson	Dexta	1960	None	D Flint
E68	David Brown	Turbo Taskmaster Super 950	1960	RJF 130 M	B Cragg
E69	David Brown	950 Diesel	1961	992 HVO	D Stannage
E70	Fordson	Super Major	1961	None	P Kirk
E71	Massey Ferguson	35 3 Cylinder	1961	None	T Littledyke
E72	Massey Ferguson	35X	1962	None	M Baxter
E73	Wheel Horse	Lawn Ranger	1962	None	J Watson
E74	Fordson	Super major	1962	RJU 620	S Ablewhite
E75	David Brown	990 IMPLEMATIC	1964	PSN 26	D Blakemore
E76	International	B414	1964	BTY 391B	L Callaghan
E77	Ford	County Super 6	1964	None	R Fenton
E78	Fordson	Super Dexta	1964	GBD 853B	W Tanser
E79	Chamberlain	Super 90	1964	PTU 339B	K Hollingshead
E80	Ford	County Super 6	1964	BTL 131 B	K Hollingshead
E81	Gutbrod	1030 Superior 16	1965	None	J Eyres
E82	Massey Ferguson	135 Multipower	1965	KHH 22C	L Neal
E83	Roadless	Ploughmaster 90	1966	None	R Fenton
E84	International	B275	1966	HVB 725D	J Coombes
E85	Ford	3000	1967	LAY 820E	L Perry
E86	International	B434 Diesel	1967	BNH 132E	T Littledyke
E87	Ford	4000	1968	NBT 260F	F McCusker
E88	Nuffield	6/95	1968	MAW 759F	J Calcutt
E89	Caterpillar	D7	1968	None	C Pitchfork
E90	International Harvester	B275	1968	SRR 432F	R Prince
E91	Nuffield	4/65	1969	KBH 382G	S Calcutt
E92	Massey Ferguson	165	1969	PAY 813G	C Stokes
E93	Ford	4000	1970	SBE 434 H	S Ablewhite
E94	Massey Ferguson	135	1970	UAU 414H	M Hancock
E95	Massey Ferguson	135	1971	RSX 481M	S Birchall
E96	David Brown	990	1971	UVN 763J	P Elliott
E97	International	276	1972	RNR 475G	R Ablewhite
E98	David Brown	885	1972	STH 9K	M Stewart
E99	Ursus	355	1972	NVL 778P	G Foster
E100	Leyland	255	1973	KNH 901N	G Brooks
E101	Massey Ferguson	135	1973	RWG 168K	C Ablewhite
E102	Leyland	255	1974	RNV 127M	A Cockerill
E103	Massey Ferguson	165	1975	HNR 327N	A McLaren
E104	Massey Ferguson	1505	1976	NHL 209R	D Wright
E105	International	674	1977	SBT 760N	D Earl
E106	Leyland	154	1978	NFC 854S	G Brooks
E107	David Brown	1210	1978	AAV 824T	P Elliott
E108	Ford	7710	1979	A855 YCY	N Burton
E109	Massey Ferguson	595	1979	KEX 552V	L Callaghan
E110	Caterpillar	D8	1980	None	C Pitchfork
E111	Mercedes Benz	U1700L	1980	CFR 591V	H Jeyes
E112	International	885	1983	A134 YET	P Stephens
E113	John Deere	2040	1984	None	A Sturt
E114	Ford	TW15	1985	C52 HAF	M Wright
E115	Ford	5610 H	1985	C429 HUL	D Allen
E116	Case	IH	1987	E611 YJL	J Gillham

## Motor Cycles

	<b>Make</b>	<b>Model</b>	<b>Year</b>	<b>Cc</b>	<b>Reg. No.</b>	<b>Owner</b>
F1	McKenzie	Lightweight	1922	1 ¾	NL 3437	D Langdon
F2	BSA	H2	1923	557	CY 5601	I Ager
F3	BSA	Model B	1924	250	HU 3954	G Hawley
F4	BSA	S26	1926	500	SV 4061	W Jopling
F5	BSA	B26	1926	250	YN 7909	M Thomas
F6	BSA	Supersport	1928	350	WC 1042	M Thomas
F7	BSA	S28	1928	500	UT 3223	W. Jopling
F8	Matchless	R/S	1928	250	YV 1578	G Crowder
F9	Royal Enfield	K	1931	976	KJ3058	Saunders Family
F10	Rudge Hitworth	250	1932	250	WJ 5550	C Keast
F11	Rudge	Special	1936	500	DJ 6117	P Haulock
F12	Velocette	M55	1938	500	ENN 421	S Roberts
F13	BSA	M21	1939	600	FTO 948	J Hall
F14	Ok Supreme		1939	250	FTV 415	B Shaw
F15	Indian	741	1942	500	KVU 854	J Shilcock
F16	BSA	WM20	1944	500	XVV 929	D Southall
F17	Matchless	G3L	1944	350		J Bazeley
F18	BSA	M20	1947	500	CFE 679	W Keast
F19	Velocette	K55	1947	350	USV 156	J Bazeley
F20	Royal Enfield	G	1948	350	ESJ 997	M Bateman
F21	Scott	Flying Squirrel	1949	600	OFC 835	A Elmore
F22	Vincent	Rapide	1949	998	DTL 559	D Roberts
F23	Corgi	Paratroopers	1950	107	KYV 964	S & R Hicking
F24	Ariel	Red Hunter	1950	350	KUJ 179	R Hamblin
F25	Sunbeam	S8	1950	500	LLM 349	S Shaw
F26	Triumph	TR5	1950	500	LX 5325	J Nelson
F27	James	Comet	1951	98	JFH 185	B Taylor
F28	Cycle Master		1952	25		D Lawton
F29	Vincent	Comet	1952	499	FP6024	D Roberts
F30	BSA Master	M21 + Sidecar	1952	600	609 XVC	J Trasler
F31	Bown	Tourist Trophy	1953	125	KBC 110	M Lee
F32	Triton		1954	750	995 YAY	A Elmore
F33	Peugeot	176 A5	1954	176	342 XVE	D French
F34	Velocette	LE MK2	1954	192	OLE 509	B Williams
F35	Cycle Master	32	1954	32	PGP 982	D Lawton
F36	BSA	Road Rocket	1954	650	887 XVR	P Doodson
F37	James	Captain	1955	197	921UXH	T Seaman
F38	BSA	M21	1955	600	XPL 813	J Trasler
F39	Triumph	Speedtwin	1955	500	HAS 685	R Hamblin
F40	Ariel	Colt	1955	200	XHA 537	T Bateman
F41	James	K7C	1956	198	XSJ 511	P Crowder
F42	BSA	Gold Star	1956	350	25GXUM	P Spencer
F43	BSA	M12	1957	600	107YUD	J Hall
F44	Norton	Dominator	1957	600	FSL 409	I Markwick
F45	Francis Barnett	Falcon	1957	197	XKH 747	A Collins
F46	Velosoley	Moped	1957	49	522 UYY	J Evans
F47	NSU	Primad	1957	150	91 MMF	J Truluck
F48	Ariel	HT 500	1957	500	395 EPC	M Crowder
F49	AJS	31	1957	650	XLN 493	R Greaves
F50	BSA	Super Rocket	1957	650	114 FMA	S S Elliott
F51	Velocette	Venom Clubman	1958	500	1915MY	R Parkes
F52	BSA	Goldstar	1958	500	411 FPL	D Hogan
F53	BSA	Super Rocket	1959	650	YAS 525	C Davies
F54	BSA	A7 Shooting Star	1959	500	UNP 596	T Fowler
F55	BSA	Bantam	1962	125	77TAU	S Robertson

F56	NSU Quickly	Quickly	1962	49	BHF874A	V Wilson
F57	BSA	A65	1963	650	EAY 397C	A Elmore
F58	NSU Quickly	Quickly	1963	49	721 RRR	V Wilson
F59	BSA	A65	1963	650	FFH946C	E Roberts
F60	BSA	Beagle	1965	65	DEX 47	D Robertson
F61	BSA	A65 Spitfire	1966	650	MUW 137D	S Guest
F62	BSA	D10 Bantem	1967	175	SYM 606F	E Roberts
F63	BSA	C15	1967	250	ERN155E	B Church
F64	Raleigh	Wisp	1967	49	LVO 134E	J Townsend
F65	Raleigh	Wisp	1968	49	RYC545F	D Johnson
F66	Raleigh	Runabout	1968	49	XRY 700F	M Walker
F67	Triumph	Trophy TR6	1969	650	HRB289H	A Barlow
F68	Moberlette	Cady	1969	49	JTF33K	A Ounsworth
F69	Gilera	Guibilea	1970	98	URL 836H	K Lee
F70	Triton	Slimlene	1970	500	MPR739H	D Parkes
F71	Suzuki	Stinger	1970	125	CAU547H	M Harris
F72	BSA	B25	1971	250	UDD 24H	R Townrow
F73	BSA	Bantam B	1971	175	RNM13J	C Oswin
F74	BSA	Lightening	1972	650	JMA 779K	A Negls
F75	Honda	K2	1972	750	PMF 115R	A Lamb
F76	Velosolex	3800	1973	50	TGU 708L	J Whiting
F77	Harley Davidson	SXT 125	1974	125	AV5606N	I Mackintosh
F78	Suzuki	GT 750	1975	750	NOA591P	D Bale
F79	Suzuki	GT	1976	380	LVL368P	C Oswin
F80	Honda	K6	1977	750	TAV583R	M Logard
F81	Yamaha	TY175	1977		YBA 4565	A Hicking
F82	Honda	Goldwing	1979		SUX 529X	D Fox
F83	Suzuki	F2	1979	50	DWG 545V	P Watson
F84	Yamaha	RD80LC	1981	79	ABW614X	P Watson
F85	Yamaha	TY175	1982	175	ACX 478Y	W Law
F86	Kawasaki	VN	1991	800	N559 NFH	D Taylor
F87	Suzuki	GP100	1991	98	1155	P Watson
F88	Harley Davidson		1995			S R Hicking
F89	Suzuki	SP	1980	370	HUT 344V	S Shepherdson

### Derby Triumph Owners Club

F90	Triumph	T100	1955	498	PV5664	A Hockley
F91	Triumph	STA Speedtwin	1964	500	BLB 211B	S Dunn
F92	Triumph	Thunderbird	1966	650	CAN 45D	A Cooper
F93	Triton	T126	1970	650	BVO2H	P Goldlex
F94	Triumph	Bonniville T140	1980	750	HAL470W	M Gee
F95	Triumph	Tiger 9551	2005	955	T9SNC	M Harrison
F96	Triumph	Thunderbird	2010	1600	EK60SYS	K Mouldycliff
F97	Triumph	Tigersport	2016	1100	HG16 JZH	A Goulder
F98	Triumph	Tiger	2018	800	FM67 DXT	T Maggs
F99	Triumph	Tiger 1050 Sport	2018	1050	DU68 NNC	D Richardson
F100	Triumph	T120	2019	1200	HY19 JJE	K Ashburner
F101	Triumph	Tiger 900	2021	900	FD21 UJM	D Manning
F102	Triumph	Rocket 3GT	2021	250	TR21 RMS	P Sampson

### Leicester Triumph Owners Club

F103	Triumph	P	1925	500	SV6682	R Sleath
F104	Triumph	TR5	1955	500	WPC 104	
F105	Triumph	Tiger	1959	500	LJV215	L Sleath
F106	Triumph	Bathtub	1964	350	42 XTG	
F107	Triumph	Bonneville	1969	650	DEE414G	R Smith
F108	Triumph	Bonneville	2009	865	JR09GDR	G Rodwell

## BSA Front Wheel Club

F109	BSA	Three Wheeler	1931		SXS 828	A Joyce
F110	BSA	TW32	1932	1020	MAS 695	D Southall
F111	BSA	S10	1933	10	WJ7752	P Quest
F112	BSA	Saloon	1934	1185	XBV 277	A Meade
F113	BSA	V Twin	1934	1275	BAU 840	C Brandon-Cox
F114	BSA	TW35 10 Deluxe	1935	1075	CPD 717	D Benjamin
F115	BSA	Scout	1937	1204	DKD 941	P Cook
F116	BSA	Scout	1937	10	HV5781	N Sabin
F117	BSA	Scout	1937	10	DOK 141	M Allott
F118	BSA	Scout	1938	12	AFU 400	P Saville
F119	BSA	Scout	1938	1200	FOG 940	D Parkin
F120	BSA	Scout	1938	1200	EXN 138	J Barrett
F121	BSA	4 Seater Tourer	1938	1203	EO6766	S Mansfield
F122	BSA	Scout	1938	1204	FKJ 168	P Nicholls
F123	BSA	Scout	1939	1201	BFN 593	S Baylis
F124	BSA	Series 5	1939	12	EVO 949	D Daniel
F125	BSA	WM20	1944	500	XVV 929	D Southall


# Boots & Brambles

• Wild Places • Happy Faces •



Parent  
& Child  
Forest School  
sessions

Family  
Sessions in  
school  
holidays

Monthly  
Into the Woods  
with Zephyr's  
Sessions for  
bereaved  
families



@boots\_and\_brambles

Outdoor Parties  
for all ages

Holiday Clubs  
for age 6+

School & group  
sessions

Alternative  
Education  
sessions

www.facebook.com/BootsandBramblesForestSchool

## www.bootsandbrambles.com





# FAIRVIEW FARM

---

## M A C H I N E R Y

Main dealers for Polaris off road vehicles and Solis tractors.  
We also offer new and used farm machinery.

Contact Us

T: 07977 975173 (Ian)

E: [fairviewfarm6600@gmail.com](mailto:fairviewfarm6600@gmail.com)

W: [www.fairviewfarmmachinery.co.uk](http://www.fairviewfarmmachinery.co.uk)

FB: [www.facebook.com/FairviewFarmMachinery](https://www.facebook.com/FairviewFarmMachinery)

Based at Fairview Farm  
Main Road  
Ravenshead  
Nottingham  
NG15 9GS



## Commercial Vehicles

	<b>Vehicle Type</b>	<b>Year</b>	<b>Reg No.</b>	<b>Owner</b>
G1	Morris Cowley	1927	BF 7812	S.Elliott
G2	Ford Model T Truck	1927	VE 4304	O.Baugham
G3	Ford Model T Truck	1927	BF 8147	J.Goodall
G4	Standard 9	1929	UW 935	S.Elliott
G5	AEC Mammoth Major Mr2	1935	BBP 425	D.Moulding
G6	Tilling Stevens	1936	NTO 143	J.Chamberlain
G7	Chevy	1937	PXS 909	V.Smedley
G8	AEC Matador	1939	Q208 RNH	C.Baker
G9	Bedford OY	1943	ATL 911	R.Johnson
G10	Foden GHT 650	1946	FED 124	J.Stafford
G11	Bedford KLD	1949	YWG 806	F.Cruickshank
G12	Austin K8	1950	1548 JG	C.Smedley
G13	Sentinel DV44	1950	TRF 598	N.Matlock
G14	Morris PV	1952	LYO 599	G.Vallance
G15	Atkinson L1266	1953	NXL 226	B. Bexton
G16	Leyland Prototype	1953	HVS 474	R.Prince
G17	Bedford O Type	1953	YCH 845	J.Bamford
G18	ERF LK44	1954	LRY 240	C.Pickering
G19	Dennis Pax	1954	UPH 966	W. Roberts
G20	Commer Super Poise	1955	YRA 955	J.Stephens
G21	Austin Loadstar	1955	RXX 905	B.Morgan
G22	Atkinson Bow Front	1955	OFF 628	B. Bexton
G23	Ford Thames E83W Pick Up	1956	TGU 454	R.Etches
G24	Morris J Van Royal Van	1956	SLO 234	G.Sumner
G25	Bedford A	1956	SYF 431	D.Chisholm
G26	BMC 710	1957	PFU 920	M.Winter
G27	Unipower Hannibal	1958	CAH 978B	B.Freer
G28	Commer Cob Van	1959	MAS 919	K.Poole
G29	Ford Thames 300E	1959	86 JTJ	M.Tonge
G30	Standard Vanguard	1959	173 UYE	R.Bacon
G31	Foden S20	1960	YAX 521	J.Dawson
G32	Atkinson L1366	1961	935 XUC	I.Patrick
G33	Ford Thames 400E	1963	986 GUV	C.Rischer
G34	ERF VT	1963	2865	J. Cadwallader
G35	Austin A60 Pick-Up	1963	331 JUE	A.Roizer
G36	Atkinson Mk1	1965	BMW 794C	D.Hayes
G37	AEC Mammoth Major Mk 5	1965	DVF 412C	D.Moulding
G38	Commer T53	1966	EVE 247D	V.Smedley
G39	Bedford TK	1968	SRR 276F	P.Coulson
G40	Atkinson Breakdown	1968	WGC 625G	B. Bexton
G41	AEC Mecury	1968	MMR 217G	J.Crombie
G42	Foden S36 Tractor Unit	1969	VRE 372G	C.Berriff
G43	Foden S40	1970	UDD 402H	A.Hulme
G44	Morris Minor 1000 Van	1971	HPE 856K	L.Cooper
G45	Atkinson Mk2 Silver Knight	1971	EFD 968K	J.Chamberlain
G46	Bedford KM	1972	NTO 163M	J.Stephens
G47	Austin Mini Van	1972	AOL 640L	S.Tidewell
G48	Atkinson Borderer	1972	HNV 526L	C.Horns
G49	Seddon Diesel	1972	CTO 485K	R.Chamberlain
G50	Atkinson Mk2 Tractor Unit	1972	BT0 533K	J.Chamberlain
G51	Ford D Series	1973	MUA 740L	D.Hayes
G52	Atkinson Venturer	1973	RAO 207M	J.Ramm
G53	King TD25 Low Loader	1973		J.Ramm
G54	ERF A Series Tractor Unit	1974	SXG 302M	T.Doxey
G55	Foden S81	1976	MYN 952P	C. Pichfork
G56	Bedford TK	1976	UVY 945R	D. Henton

G57	ERF B Series Tractor Unit	1978	BVF 637T	N.Addy
G58	ERF B Series Tractor Unit	1979	ACB 432T	R.Chamberlain
G59	Ford D Series	1979	JLK 767V	L.Wilkinson
G60	Leyland Cheiftain	1980	JDC 299W	D.Chisholm
G61	Daimler 813	1983	TTN 801Y	G.Vallance
G62	ERF C Series	1983	A126 NYD	R.Noeman
G63	Mini Pick Up	1983	LVL 167Y	P.Houldershaw
G64	Seddon Atkinson 401	1983	A191 BHL	R.Chamberlain
G65	Foden S106	1984	B201 SPW	R.Baker
G66	Ford Transit Mk2	1984	A640 2YX	A.King
G67	Ford Cargo Tractor Unit	1984	B560 RBF	L.Coxon
G68	Ford Cargo	1985	C695 MAL	P.Coxon
G69	ERF C Series	1985	C322 UVT	K.Casselden
G70	Mercedes 1114	1986	BIG 6102	M.Winter
G71	Volvo F10	1987	E598 HBF	Danjak
G72	Foden 4000 Series	1988	FN80 UHN	J.Bates
G73	ERF E14	1988	F308 EWD	G.Moore
G74	Ford Cargo	1989	F559 FTA	M.O'reilly
G75	Volvo F10 4x2	1990	H693 FRK	S.Naylor
G76	ERF E10	1991	G9 ERF	A.King
G77	Layland Daf T244	1992	K915 TFK	J.Atkins
G78	ERF E12 TX 300	1992	J964 GLG	R.Chamberlain
G79	ERF E10	1992	K624 ABW	D & G. Brothwell
G80	Scania 2 Series	1992	J 341 VOJ	Hughes Driver Training
G81	Ford County 4x4 Transit Van	1995	N809 TUG	L.Coxon
G82	ERF EC10	1995	P585 JVV	R.Chamberlain
G83	ERF EC14	1995	P769 ADU	J. Oakden
G84	Foden S104T Tractor Unit	1995	N206 NAY	C.Selby
G85	Scania R143 Streamline	1996	P120 HNC	R.Baker
G86	ERF EC10	1996	N76 DWU	J.Lyon
G87	ERF EC11 Olympic	1997	L40 KRT	R.Eldred
G88	Foden 400 XL Series	1997	R146 SBA	C.Stocker
G89	ERF EC11	1997	G13 ERF	S. Cadwallader
G90	ERF EC11 34ST	1997	P40 EJH	G. Hollingworth
G91	ERF EC11	1998	H22 ERF	J.Hazeltine
G92	Scania T420	2000	W722 B0M	J.Cole
G93	Foden Alpha	2002	BU 52 XJL	B.Neul
G94	Foden Alpha 2 420	2004	SY04 BMV	P.Stubbs
G95	Volvo FH12 Globetrotter	2005	CU54 HYF	S.Headley
G96	Scania Tractor Unit	2005	MR54 FBN	S.Calcutt
G97	Scania R Series 420	2006	R1XHH	R.Whinmill
G98	Scania Top Line V8	2011	R500 HWS	J. Cadwallader
G99	Scania R580	2014	FEN770N	R.Fenton
G100	Renault T Range	2016	T23 HDT	Hughes Driver Training
G101	Renault	2022	AP 72 DTV	J. Cadwallader



**Why not join our Facebook Page  
(Rempstone Steam and Country Show)  
to keep in touch with other visitors.**

## Military Vehicles

	<b>Make/Model</b>	<b>Year</b>	<b>Reg. No</b>	<b>Owner</b>
G102	Ford PX Tourer	1936	OX5 625	C.Penny
G103	Morris CS8	1940	GNV 143	P.Stevenson
G104	AEC Matador	1940	TWR 723F	M.Naylor
G105	Dodge WC 51	1942	MXS 513	M.Lee
G106	Willys Jeep Mb	1942	TNR 186	D.Moore
G107	AEC Matador	1942	YSV 399	D.Blakemore
G108	Ford GPW	1943	56 34 AH	C.Attewell
G109	M45 Anti Aircraft Gun	1943		C.Attewell
G110	Humber Heavy Utility	1943	HGO 330	M.Lambe
G111	Willys Jeep Mb Soft Top	1943	SSV 950	R.Allured
G112	AEC Matador Fuelbowser	1943	NGY 434	M.Howdel
G113	Studebaker M29 Weasel	1943		A.Gould
G114	Whites Halftrack M3	1943	938 XUW	A. Richards
G115	Norton 16H	1943	NXF 915	A.Dyer
G116	Dodge WC 51 Weapon Carrier	1943	580 UXL	D.Cockayne
G117	Willeys Jeep	1945	790 YUA	P.Stevenson
G118	Ford Jeep GPW	1945	419 YUV	A. Richards
G119	Willey Jeep CJ2	1945	YXG 752	R.Allured
G120	Scammell Explorer Recovery	1950	MVS 864	M. Simpson
G121	Austin Champ	1955	258 UYL	A.Lewis
G122	Scammell Explorer Recovery	1955	ASJ 355	W.Marshall
G123	Scammell Explorer	1955	YAS 852	W. Sherrif
G124	Bedford Green Goddess	1956	SYH 374	J.Ashcroft
G125	Landrover Series 1	1957	MXS 513	M.Lee
G126	Bedford Green Goddess	1957	SYH 358	A.Westwood
G127	Atkin Fisher Snowtrac	1965	GUC 812C	K. West
G128	Aktic Sno-Tric Sc2	1968		K. West
G129	ZIL 131	1969	MEL 212H	C.Pateman
G130	Land Rover Series 2 Ambulance	1971	RJL 532N	D.Harrison
G131	Standard MJ-1A	1975		K. West
G132	Scammell Crusader	1976	NWV 46P	G.Moore
G133	Land Rover Lightweight FFR	1978	GOE 913V	S.Vickers
G134	Bomb Disposal Buggy	1980		C.Attewell
G135	Alvis Cvr1 Samson	1980	00GM18	K.West
G136	Land Rover Lightwhite	1980	BFW 452W	A.Dyer
G137	A M General M934 Command Post	1984	A850 BKU	A.Gould
G138	Bedford MJ	1985	B373 PVY	H.Worth
G139	Glover Webb Black Board	1985		C.Attewell
G140	DAF T244	1992	J599 LMW	C.Attewell
G141	Land Rover Pulse 130	1997	R472 XBT	M.Howdel
G142	Land Rover Rwmik	1998	R107 NDS	S.Vickers

## American Vehicles

	<b>Make/Model</b>	<b>Year</b>	<b>Reg. No</b>	<b>Owner</b>
G143	Mack LBJ	1950	988 UXU	D.Wilson
G144	Chevvy Apache	1959	762 UYF	A.Dyer
G145	Mack Rd 600	1973	OBA 611P	R.Goodall
G146	Mack R6 11 6x4	1977	Q317 APN	P.Leek
G147	Ford W9000	1978	KVT 292V	N.Whittaker
G148	Dodge Ram	1980	Q242 VOF	K.Cresswell
G149	Peterbilt 359	1987	D11 CAD	D. Cadwallader
G150	Frightliner 120 Fld	1987	F 901 JUE	D. Cadwallader
G151	Mack Ultratriner Mh 613	1989	G771 X HT	C.Brailsford
G152	Peterbilt 379 Ex Hood	1994	L380 RKU	J. Cadwallader
G153	Chevrolet C3500 Cheyenne	1998	R191 ATR	O.French

## Breakdown Vehicles

	<b>Make/Model</b>	<b>Year</b>	<b>Reg. No</b>	<b>Owner</b>
G154	AEC Matador	1945	GSU 889	P.Chamberlain
G155	Dennis Pax	1949	KAL 656	A.King
G156	Atkinson Mk2 Breakdown	1971	GVO 29J	P.Smith
G157	Scammell Crusader	1976	PGW 883R	D.Wilson
G158	Mercedes Atego 818 Recovery	2003	BU03 UYE	C.Redburn

## Buses

G159	Leyland PS1	1947	WAL 782	D.Wheatley
G160	AEC Regent Bus	1955	UTC 672	S Vallance
G161	AEC Regent V	1960	AAL 522A	D.Wheatley
G162	Bristol MW 6G	1965	DNU 20C	L Pestell
G163	Bedford S/D YMT	1976	RRR 517R	D.Wheatley
G164	AEC Routemaster Bus			J.Blackmore



Established in 1948, Crouch Recovery has grown from a family run business with David and Barbara Crouch running a local filling station and recovery service to one of the biggest and fastest growing recovery operators in the UK, now spanning four generations.

Operating from our headquarters in Kibworth, we cover Leicestershire, Northamptonshire and Warwickshire with our 8 depots. We are proud of our well-maintained fleet of light/heavy recovery units, slide beds, accident units, mobile cranes and low loaders and they are always on stand-by to deal with any situation or incident.

## Veteran, Vintage & Classic Cars

	<b>Make/Model</b>	<b>Year</b>	<b>Reg. No</b>	<b>Owner</b>
H1	Phoenix Quad Car	1905	ABC 123	Mr Bower Lowe
H2	Jackson	1907	BY177	Mr Bower Lowe
H3	Model T Truck	1914	BF 5330	Trevor Williams
H4	Model T	1914	SV7168	Mr I Gilbert
H5	Bentley	1924	MS5563	Mr D Morley
H6	FORD T	1924	AX 5156	John Palmer
H7	Morris Coweley	1925	PY2677	Mr Playfoot
H8	Austin Seven	1930	430 XUC	Andrew Oliver
H9	Austin Van	1931	NAS 328	Dan Brothwell
H10	Hillman Minx	1932	589 UXJ	Mr K Mitchell
H11	Standard 9	1932	GW 8243	Mr Siggins
H12	Austin 7	1932	JF3577	Mr P Claricoates
H13	Lanchester FHC	1932	KV3538	Mr H Saunders
H14	Ford 14	1934	LXS 732	Paul Bainbridge
H15	Wolseley Hornet	1935	BON 127	Valerie Oliver
H16	Morris Eight	1935	BKX343	Colin Hazel
H17	Ford 3 Window	1934	OSK 145	Graham Bakewell
H18	Morris 12/4	1936	UXS 326	C Thomas
H19	Ford CX	1936	HV5918	Lewis King
H20	Wolseley 14/56	1938	CMB135	Mr R Carrier
H21	Willys Jeep	1943	404 SHA	S Hickling
H22	MG TC	1948	UML114	Tony Mowbray
H23	Chevy Fleetmaster	1948	FSK 272	F Pelosi
H24	Jowett Javelin	1949	EU9627	Daniel Jones
H25	Ford Pilot Pick Up	1950	GRY98	Mr Foukes
H26	Chevrolet Van	1950	802 YUK	R Gould
H27	Morris Oxford	1950	LCX 580	D Robinson
H28	Riley DHC	1950	KNX824	Roy Carrier
H29	Huson Pacemaker	1952	PSK526	Rupert Chambers
H30	Morris 6	1950	LBK 176	Mr M. Burbidge
H31	A40	1953	RUO478	Ian Shippen
H32	Vauxhall Wyvern	1954	MRK 446	Mr J. Page
H33	Morris Oxford	1954	KUT249	Mr Shaw
H34	Chevy Bellair	1954	CKS 172	Mr L. Smith
H35	Standard 10	1955	SRU 337	K Mitchell
H36	Jaguar XK140	1955	NGL172	Mr C Thompson
H37	Ford Custom	1955	GSL 688	K Arm
H38	Chevy Van	1956	146 UYH	Mr Lillie
H39	Ford Pop 100E	1959	TUH 257	Mr S Draycott
H40	Jaguar XK 150	1959	432PP	Pat Shawcroft
H41	Landrover Series 2b	1959	521UXC	Paul Coulson
H42	Ford 107E	1960	635 YUC	Jane Wooding
H43	VW Beetle	1960	8683 NA	Lynne Wray
H44	Daimler Dart	1961	824 NKP	Mr T Fardoe
H45	Vauxhall Victor	1961	SFO 471	Mr Clarke
H46	Rover P4	1961	801VPD	Paul Ross
H47	Austin Healey	1962	ESK548	Mr John Gregory
H48	Vauxhall Cresta	1962	403 UXA	G Hamblin
H49	Rover P4	1962	PWC 522	Mr B Lester
H50	VW Type 2	1962	767 YUE	Ed Fisher
H51	Vauxhall Cresta	1963	864 VBF	S Akiens
H52	Humber Septer	1963	417 HNX	Mr G Townsend
H53	Triumph 2000 MK1	1965	CKO 696C	Pete Gillott
H54	Wolesly 6/110	1965	BED 690C	Mr G Cox
H55	Ford Mustang	1965	JWE 810C	Graham Norris
H56	Morris Minor	1965	EWD 421C	J Williams
H57	Triumph Herald	1966	DVG 804D	A Herlock
H58	Wolesley	1967	PRW 216E	Mr Clarke
H59	Land Rover Series 2B	1967	PXC 428E	Cheryl Stokes
H60	Austin 1100	1968	PJU 776G	Mr M Clarke
H61	Ford Cortina	1968	WBJ 33G	Kevin Cartner

H62	Triumph 2000 MK1	1968	SRW 361G	Mr L Lufkin
H63	Hillman Huskey	1968	NFL 45F	M Etherington
H64	Austin 1100	1968	PJU 776G	Martin Wills
H65	Daimler V8 250	1968	SRR 457F	Bernard Marsh
H66	Riley Elf	1968	FHC 572G	Amanda Spray
H67	Morris Minor	1968	LJL 20G	Malcolm Seal
H68	Triumph Vitesse	1969	YWY 924G	K Hedges
H69	Sunbeam Stiletto	1968	CRO 115F	Davis Jones
H70	Daimler V8 250	1969	VEE 8D	Tony Fardoe
H71	Rover 2000	1969	801VDP	Paul Ross
H72	Triumph 2000	1970	EUY 240J	Mr Page
H73	Triumph Herald	1970	DGC 42H	Mr Foreman
H74	Mini Van	1970	RCJ 781H	Martin Brooks
H75	Vauxhall Victor	1971	BAY101K	Christie Taylor
H76	MGB	1971	LEC 723J	Faisal Hasan
H77	Bond Bug	1971	JJK 775K	D. Albion
H78	Rover 2000	1971	USG 176J	E Hathaway
H79	Triumph Herald	1971	GLM 962J	John Eade
H80	Morris Minor	1971	PSL 503	J Williams
H81	Ginetta	1971	ERR335J	John Chambers
H82	Lotus Elan	1972	VVT 750L	Wayne Howells
H83	Triumph TR6	1972	GOX 272L	Kay Howells
H84	Range Rover	1972	JKA 499L	Ben O Reilly
H85	Rover	1973	OTF371M	Ian Ball
H86	MGB GT	1973	UYA 100M	Mr R Corston
H87	MGB GT	1973	UBM 754M	Mathew Pounder
H88	Ford Taunus	1973	AJW 166M	Mr Banks
H89	MGB GT	1975	HEY 885N	Mr I Brewer
H90	Triumph Spitfire	1978	XAY 955S	Mr Cooper
H91	Ford Cortiina	1978	WAL34S	David Spray
H92	Escort RS2000	1978	CTM 490T	John Bee
H93	Triumph Dolomite	1980	159 DAU	Mr T Barden
H94	Mini Clubman	1981	RKK 716W	Peter Wilson
H95	Series 3 L/Rover	1982	WDV 361X	David Blakemore
H96	Morgan	1984	HDT 624	David taylor
H97	Mini Mayfair	1985	C306 TDX	D Albion
H98	Peugeot 205 GTI	1988	E635 MEG	P Sharp
H99	Mini Mayfair	1988	FG29 NWK	Chris Redburn
H100	Jaguar XJS	1988	F342 OFJ	Simon Young
H101	Bentley Mulsanne	1990	H462 ATV	Mark Cadwallador

**On Saturday there will be a display of Daimler and Lanchester cars by their Marque Club.**



**Followed on Sunday by the Aston Martin & Lagonda Owner's Club**

## SING IT HAPPY CHOIR

A fun wellbeing choir for all adults  
of all ages and abilities.

Learn fun vocal warmups and sing a  
range of songs over the decades!

### Choir Locations & Times

Loughborough	Every other Wednesday 7.30pm - 8.30pm	Gorse Covert Community Centre Maxwell drive, Loughborough, Leicestershire LE11 4RZ
Leicester	Every other Tuesday 7.30pm - 8.30pm	Wanlip Community Centre Church Road, Wanlip, Leicester LE7 4PJ
Barrow Community Library	Every other Tuesday 11.30am - 12.10am	Barrow Community Library 33 North Street, Barrow upon Soar, LE12 8PZ

**£6 attendance fee**

For more information please visit [www.singithappy.uk](http://www.singithappy.uk)  
or contact Stella at [contact@singithappy.uk](mailto:contact@singithappy.uk)



## Classic Caravans

	Make/Model	Year	Owner
H102	Triumph 2000 (EUY 240J)	1970	R Page
	Car Cruiser Carrisma	1960	
H103	Land Rover (H527 AYU)	1991	Mr Hirak
	Fisher Holivan	1976	
H104	Wolseley (UOU 611)	1958	S & J Hadfield
	Car Cruiser Carrisma	1960	
H105	VW Type 2 (XAL 86G)	1968	Darhill Shae
H106	VW Type 2 (JKM 353L)	1973	Pip Barnes

### VW Type 2 Camper Van



In late 1967, the second generation of the Volkswagen Type 2 (T2) was introduced. It was built in West Germany until 1979. In Mexico, the Volkswagen Kombi and Panel were produced from 1970 to 1994. Early models are often called the T2a (or "Early Bay"), models after 1971 are called the T2b (or "Late Bay") and models after 1991 are called the T2c. This second-generation Type 2 lost its distinctive split front windshield, and was 22.5 cm (9 in) longer and considerably heavier than its predecessor. Its common nicknames are *Breadloaf* and *Bay-window*, or *Loaf* and *Bay* for short. At 1.6 L and 35 kW (48 PS; 47 bhp) DIN, the engine was also slightly larger. The battery and electrical system was upgraded to 12 volts, making it incompatible with electric accessories from the previous generation. The new model eliminated the swing axle rear suspension and transfer boxes previously used to raise ride height. Instead, half-shaft axles fitted with constant velocity joints raised ride height without the wild changes in camber of the Beetle-based swing axle suspension. The updated Bus transaxle is sought by off-road racers using air-cooled Volkswagen components.

## Showmans Vehicles

	<b>Make/Model</b>	<b>Year</b>	<b>Reg</b>	<b>Owner</b>
J1	Showmans Living Van	1932		P.CHAMBERLAIN
J2	AEC Matador	1942	XTM293L	T.MASON,KETTERING
J3	Scammell 20 Ton Motive Unit	1944	DKY 462	J.MOORE
J4	WH Woodcock Showmans Van	1946		S.EARL
J5	Showmans Living Van	1950		P.CHAMBERLAIN
J6	Showmans Living Van	1952		R.CHAMBERLAIN
J7	Southern Living Van	1953		L. DICKENS
J8	Garlic Showmans Living Van	1957		T.MASON
J9	Scammell Highwayman	1960	WVV 783	G.POWELL
J10	Scammell Highwayman	1960	209 BGO	C. BARLOW
J11	ERF KV	1961	133 URB	B.WELLS
J12	Scammell Highwayman	1965	MMV 10C	P.CHAMBERLAIN
J13	Brayshaw Living Van	1965		S.WHITE
J14	Scammell Highwayman	1967	MHW 492F	S.EARL
J15	Scammell Highwayman	1968	RVO 748F	C. PICHFORK
J16	Showmans Living Van			C. PICHFORK
J17	Showmans Living Van	1969		C. EDWARDS
J18	Showmans Van	1970		J. MOORE
J19	Showmans Living Van	1970		C. BARLOW
J20	Brock House Stoves Trailer	1972		W.MARSHALL
J21	ERF B Series Tractor Unit	1976	NTT 522P	S.WHITE
J22	Foden Fleetmaster	1983	ROV 702Y	L. DICKENS
J23	ERF C Series	1985	C18 ERF	C. EDWARDS
J24	14 Foot Living Trailer	1970S		J.MOORE
J25	Showmans Living Van			J.CHAMBERLAIN
J26	Showmans Living Van			B.WELLS

**Friday and Saturday nights we turn on the lights!**





# Bedfordshire Steam & Country Fayre



15th, 16th & 17th September 2023

Turvey House, Turvey, Bedfordshire, MK43 8EL



**MANY GREAT  
ATTRACTIONS**

### Admission Prices

Adults: £15.00 Friday,  
£20.00 Sat & Sun  
(Children under 16 free)

Free Entry to  
SAC Members



**GATES OPEN  
9AM**

**Caravan &  
Camping Area**

Download or contact for  
booking form

**FREE CAR  
PARKING**

**Coach Parties  
Welcome**  
please contact us

Bedford Steam Engine  
Preservation Society



@BedfordSteam



Book Tickets Online at Discounted Prices! [www.bseps.org.uk](http://www.bseps.org.uk)

All Enquiries to: Tel: 01462 887268 Email: [show@bseps.org.uk](mailto:show@bseps.org.uk)  
Bedfordshire Steam & Country Fayre, PO Box 1572, Doncaster, DN1 9TS



## Working Area

It's not very often that you get the opportunity to see the engines and equipment doing what they were designed for. In the Working Area we have demonstrations of Wood Sawing, Logging and Threshing all of which are noisy dirty and arduous, not to mention dangerous, occupations. Steam Threshing continued into the early fifties in some areas but was overtaken by the rise of the tractor. It is quite appropriate to see threshing at the show as in the 1870s a steam engine business was started at Villa farm. In 1906 it was bought by the Beeby brothers. They eventually had eleven teams of engines which were used for ploughing, harrowing, mole-draining and cultivation. Later threshing was added. The firm ceased trading in 1994 and most of the old engines were scrapped. They held the first rally in 1956 and a Rempstone Steam Engine Rally has been held annually, at first in Rempstone then other farm sites in the area but more recently at Turn Post Farm Wymeswold.

*As you will see from the threshing and sawing demonstrations, the working practices of the time were somewhat hazardous with long open belt drives and unguarded pulleys. The operators are familiar with the environment and where possible guards have been fitted, hence it is imperative that visitors are kept outside the area behind the safety fencing. Please respect these rules for your safety and that of the operators.*



### **Exhibit**

W Graham Perth rack saw bench-willicut-zt (Pre WW1)  
Circular Saw

### **Owner**

The Brothwell Family  
Mr D Palmer

### **Engines:**

1922 Ruston & Hornsby Traction Engine (Exhibit A23)  
1907 Ruston Proctor, 7nhp Traction Engine (Exhibit A22)  
1920 Foster 7nhp Traction Engine (Exhibit A20)  
International w6 Standard  
Fordson Major 1957. (URT 312)  
Fordson 6600 1975 (MRB 296P) with 1970s Parmiter Rear Loader  
Fordson Tractor 1957 (706 XUB)

The Brothwell Family  
Mr D. Palmer  
Mr D Bosworth  
E Crane, J Crane & S Tansley  
Mr N Bosworth  
Miss L Cope

Assorted Log and Timber

Mr N Cope

Clayton and Shuttleworth 1904 Threshing Drum, Driven by 1943  
International w6 Standard  
6 inch Racksaw - Steady Eddie Co, Driven by 6 inch SD Ruston Proctor

E Crane, J Crane & S Tansley  
Mr R Kew

### **Geoff James c/o 1995 Association Exhibits**

1937 James Clay Saw Bench  
1910 Ducking Grinding Mill (1910) Driven by 1945 International w4 Tractor  
  
1942 Willys Jeep

## Trophy Awards and Prizes 2022

**J. C. Ford Trophy**  
(Best Steam Tractor)

Foster 'Abigail'  
A Ragsdale

**J. T. Beeby Trophy**  
(Best Ploughing Engine)

Fowler  
A Flear

**S. H. K. Gurley Shield**  
(Best Showman's Engine)

King George V  
J Dunford

**John Blagg Cup**  
(Best Road Locomotive)

Aveling & Porter 'Emma'  
A Henton

**M. J. Beeby Trophy**  
(Miniature 4" Scale and Over)

4" Burrell Scenic Showman's  
F Walker

**P.V. Price Tankard**  
(Best 1930-1950 Tractor)

Allis & Chalmers U  
L Gilbert

**M Bosworth Memorial Trophy**  
(Best Crawler Tractor)

Fordson Major County Crawler  
P Kirk

**Phil Heath Memorial**  
(Best Model Fairground Attraction)

1/124 Scale Model Fairground Rides  
M Reynolds

**Richard Godber Trophy**  
(Best Motor Cycle ridden to show)

BSA A65 Spitfire  
S Guest

**James Proctor Memorial Shield**  
(Best Aveling & Porter)

Aveling & Porter 'Barbara'  
G Lamb

**Niall Lander Trophy**  
(Engine to show under own power)

J & H McLaren 'The Little Wonder'  
S Arrowsmith

**Doug Creasey Trophy**  
(Best Steam Working Exhibit)

Ruston & Hornsby 'Hildary'  
Brothwell Family

**J. Wood Trophy**  
(Best Half Full Size)

6" Samson Little Samson Tractor  
C Webb

**The Fergiland Trophy**  
(Best Ferguson Tractor)

Massey Ferguson  
A McLaren

**Pre 1930 Tractor Trophy**

Minneapolis 2741  
M Jopling

**Steward Perpetual Trophy**  
(Tractor Longest Driven to Show)

1950 John Deere  
R Bulley

**S. A. Tyers Tankard**  
(Best Vintage Car)

1962 Austin Healey  
J Gregory

**Bob Pemberton Shield**  
(Best Classic Motorcycle)

Suzuki GT750  
D Bale

**W P Price Trophy**  
(Best Working Stationary Engine)

Bamford Tulip Top 1920  
L Sleath

**B.P. Farm Service Trophy**  
(Best Steam Wagon)

Sentinel S4  
P Massey

**George Archer Trophy**  
(Best G. P. Traction Engine)

Foster 'Fiery Elias'  
A Boston (I Creasey)

**Bexton & Smith Trophy**  
(Best Steam Roller)

Aveling & Porter 'Jenny'  
A Baker

**Trevor Walton Memorial Shield**

(Miniature 3" Scale and Under)

3" Fowler R3 Showman's  
Engine  
R & J Smith

**The R & Z Tankard**  
(Best Post -1950 Tractor)

Fordson Major E1A  
P Chadbourne

**W.P. Price Tankard**  
(Best David Brown Tractor)

David Brown Cropmaster TVO  
L Gilbert

**Henry Booth Memorial Cup**  
(Best Model Engineering Project)

1/12 Scale Model Shops  
S Mortimer

**Ladies Choice**  
(Vintage Car)

C1950 Ford Pilot Pickup  
Mr Foukes

**Frank Lambert Shield**  
(Best Vintage Motorcycle)

Vincent HRD Rapide  
D Roberts

## The Barking Mad Dog show (Saturday and Sunday)



### Saturday:

- Fastest Dog
- Best Effort
- Best Puppy
- Best Child handler
- Best Adult Handler
- Best High Jump
- Fastest Adult around Course
- Fastest Child around Course
- Best Child Limbo
- Best Adult Limbo

### Sunday:

- Adorable Puppy
- Golden Oldie
- Waggiest Tail
- Best Child handler
- Best Rescue
- Prettiest Female
- Handsomest Male
- Best 6 Legs
- Best sausage catcher
- Best in Show

### **Sponsored by:**

Rempstone Steam and Country Show  
Pinkfox Dog Agility Training  
Toria's Books Ltd  
Woodys Wags, Woodhouse Eves  
Wash and Wags Dog Grooming, Barrow Upon Soar  
Moretons Mutts, Cosby  
Gilbert's Gallop Secure Dog Walking Field  
Fox and Dogs  
Woof to Wonderful Dog Groomer  
The Good Dog Life



INEOS  
GRENADIER

NOW AVAILABLE  
TO ORDER

# BUILT ON PURPOSE



INEOS  
GRENADIER

Sandiccliffe

**TOP  
SECRET**  
*events*

0115 822 94 98

• corporate • events • bars • parties •

## Proud Sponsors & Suppliers to the Rempstone Steam & Country Show

Support Rempstone's awesome beer tent returning to the show for another year. Head down to The Steaming Man for a great range of drinks including real ales and ciders. Great live music all weekend

- Event and exhibition AV Technology
- Audio visual equipment hire
- Audio lighting, projection, filming
- Event production
- Conferences and awards
- Roadshows
- Marquees and structures
- Event bars

